



# Your guide to Somerset collection services



[www.somersetwaste.gov.uk](http://www.somersetwaste.gov.uk)

---

Managing waste services on behalf of all Somerset councils

 [facebook.com/somersetwaste](https://facebook.com/somersetwaste)  
 [twitter.com/somersetwaste](https://twitter.com/somersetwaste)



**Waste less    Recycle more    Save money**

*Spring 2019. See website for latest version*

## Why everyone recycles

**Cut costs and protect services:** Every year, you help save millions of pounds by recycling. But a little extra effort could save millions more; an easy way to ensure funds are available for other vital local services.

**Conserving the future:** Reuse and recycling gives items and materials a new life, which saves scarce resources and protects the environment.

**And more to come:** New Recycle More weekly collections will start rolling out across Somerset soon. Every home will receive full details well in advance. Recycle More plans to collect much more plastic packaging and other materials. That will leave far emptier rubbish bins, which will then be collected every three weeks.

## Your collections

Most Somerset homes have weekly food waste and recycling collections, fortnightly refuse collections and, for a fee, can order an optional fortnightly garden waste service. Most blocks of flats have shared bins for recycling paper, glass and cans, and for refuse. For kerbside collections, please:

- Without blocking pavement or road, put containers where easily seen on the edge of the property by **7am** on collection day and no earlier than the night before.
- Take containers in as soon as possible after collection.
- Leave containers if you move (except, subscribers only, garden waste bin if moving within Somerset).

For latest information and ordering replacement containers: [www.somersetwaste.gov.uk](http://www.somersetwaste.gov.uk); for advice or action, including missed collections, contact your district council - see page 8.

# Your weekly food waste collections

A kitchen caddy and a kerbside collection bin to help food waste to be easily and cleanly recycled into electricity and agricultural fertilizer at our Somerset anaerobic digester.

We collect all food waste, including:

- Cooked, mouldy and raw food
- Fruit and vegetables
- Meat, fish, cheese
- Bread, pasta, cereal
- Tea bags, coffee grounds
- Paper kitchen towel and napkins



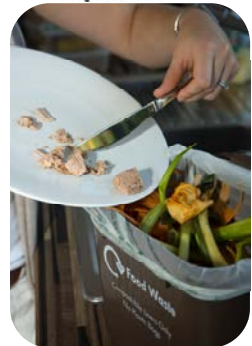
Do not include any plastic, garden waste or any other materials with food waste. Store bin away from heat and direct sun.

## Compostable liners

We recommend using compostable liners, certified with the “looped seedling” logo to show they are compostable, or newspapers to line your caddy or wrap food waste. Local shops and supermarkets sell liners. Do not use plastic bags, even biodegradable ones.



To clean caddy, wipe with kitchen towel, rinse with washing-up liquid or pop it in your dishwasher. Wash hands and surfaces after handling food waste.



## Lining a caddy with newspaper

Use a few sheets of newspaper to line a caddy, leaving some to fold over the top edges. When full, fold the overlap back on the food and cover with another sheet tucked down inside. Tip out into the food waste kerbside bin, which can go out for collection after locking the lid with the handle fully forward.

# Your weekly recycling collections

To help your recycling crews, please sort and roughly segregate materials in the recycling boxes without using carrier bags. Use one box, if that is all you need.

## Box 1 (usually green)

- **Paper** - newspapers, magazines, directories, leaflets, white envelopes and other paper
- **Glass bottles and jars** - rinsed, not broken; no table or cook ware or window glass

## Box 2 (usually black)

- **Food and drink cans** - rinsed, and squashed with tops and steel jar lids trapped inside if possible
- **Aerosols** - only when empty; do not pierce or squash; discard tops and nozzles
- **Plastic bottles** - discard tops, please rinse; bottles only - no pots, tubs, trays or film
- **Cardboard** - brown, grey, greeting cards, brown envelopes. Put small pieces into larger boxes; flatten all boxes; cut or tear up large pieces. Take large pieces or more than the equivalent of two recycling boxes when flattened to recycling sites
- **Foil** - Aluminium foil only. Scrunch test it: squeeze, and if it stays scrunched, it can be recycled

**On top or alongside boxes:** Shoes (any condition, tie in pairs) and all textiles in any condition – including clothes, sheets and curtains, but not stuffed items, such as duvets, pillows or quilts – put out in bags (not black sacks) to keep dry. Please label “textiles”.

# Your rubbish collections



Domestic rubbish is collected every fortnight. If you have storage space, a wheeled bin is provided. Rubbish must be within the bin with lid closed. Do not discard any materials that could be recycled into your rubbish bin or

black sacks. Extra rubbish beside or on top of the bin will not be taken. If a wheeled bin is unsuitable for your property, up to four black sacks of refuse will be taken each time.



| ✓   | Taken in refuse collection | ✗  | No thanks |
|---|----------------------------|--|-----------|
| <p>Household waste that cannot be recycled or composted, such as:</p> <ul style="list-style-type: none"> <li>✓ Plastic film</li> <li>✓ Vacuum cleaner contents</li> <li>✓ Cat, dog or other pet litter</li> <li>✓ Disposable nappies (cut waste and save money with cloth nappies - see our website)</li> </ul> |                            | <ul style="list-style-type: none"> <li>✗ Food waste</li> <li>✗ Anything you can recycle</li> <li>✗ Hot ash (leave to cool)</li> <li>✗ Hypodermic needles</li> <li>✗ Commercial waste*</li> <li>✗ Rubble, earth, stones*</li> <li>✗ Garden waste*</li> <li>✗ Bulky household items*</li> <li>✗ Engine oil, paint, chemicals*</li> </ul> <p>* Take to a recycling site</p> |           |



## Home composting

Home composting saves money and, for most garden and some food wastes, is the cheapest, simplest and best environmental option. Somerset Waste Partnership promotes home composting - check our website for offers on bins.

## Optional garden waste collections

Paid-for at-cost fortnightly garden waste collections are available with a wheeled bin or compostable sacks. To order, please see our website or contact your district council. Garden waste must be contained within sacks or bin with lid closed. Compost excess garden waste or take to a recycling site.



Most garden waste is collected, including:

- Flowers, plants, grass and weeds
- Hedge prunings (not over 10cm thick)
- Straw or sawdust (if pet bedding, only from domestic vegetarian pets)



**Do not include:** non-garden waste; pet or animal manure; cat litter; compost; soil or rubble; Japanese Knotweed, Common Ragwort or ash trees affected by Chalara dieback. For plant disease guidance, and to check subscription terms and conditions, see website. (Internet access is available at every library.)

## Other information

**Assisted collection:** Free service for those whose mobility problems or impairment means they cannot move waste containers to the kerbside and no-one in the household can assist. Containers collected from an agreed external point.

**Bulky waste collection:** In a paid-for at-cost service, district councils collect bulky items, such as furniture or domestic appliances. These can also be taken to a recycling site or suitable items can be donated to charity.

**Clinical waste collection:** Free service for households that need clinical materials, such as syringes, collected on a one-off or regular basis.

**Blocks of flats:** Usually have large shared bins for recycling and refuse. Recycling boxes and food bins may be provided for individual use if there is an accessible, easily seen collection point.

**Recycling sites:** Dozens of materials are taken for recycling at Somerset's 16 site. Full details can be found on the website.

**Reuse:** Before disposing of any item from around your home with more life in it, consider if it can be reused, such as by selling or donating it.

Somerset Waste Partnership manages waste services on behalf of all Somerset councils. For collection enquiries, contact your local district council:

**Mendip District Council - Customer Services**

T: 0300 3038588 E: customerservices@mendip.gov.uk

**Sedgemoor District Council - Customer Services**

T: 0300 3037803 E: customer.services@sedgemoor.gov.uk

**Somerset West and Taunton Council - Customer Services**

T: 0300 3048000 www.somersetwestandtaunton.gov.uk

**South Somerset District Council - Customer Services**

T: 01935 462462 E: sssc@southsomerset.gov.uk

For enquiries on recycling sites, contact:

**Somerset County Council - Somerset Direct**

T: 0300 1232224 E: somersetdirect@somerset.gov.uk

**For further information on household waste and advice on business waste recycling, visit:**

**[www.somersetwaste.gov.uk](http://www.somersetwaste.gov.uk)**



To request this document in an alternative format, please email enquiries@somersetwaste.gov.uk or call 01823 625700.

Internet access is available at every library.

*Spring 2019. See website for latest version*